

## DEVELOPMENT OF FUNCTIONAL LOW-FAT YOGHURT FORTIFIED WITH PSYLLIUM HUSK MUCILAGE: QUALITY ATTRIBUTES, MICROSTRUCTURE, AND ANTIOXIDANT CHARACTERISTICS

Mohamed N. A. Hassan<sup>1</sup>, Aida S. Salem<sup>2</sup>, Ashwak Abdel-moneim Hassan<sup>1</sup>✉, Hoda H. Abozied

<sup>1</sup>Dairy Science Department, Faculty of Agriculture, Cairo University  
3 Elgamaa St., Giza 12613, **Egypt**

<sup>2</sup>Dairy Technology Department, Animal Production Research Institute, Agricultural Research Center  
Nadi El-Seid St. – Dokki, Giza 12618, **Egypt**

### ABSTRACT

**Background.** Psyllium has a long history as a dietary supplement, since it is a rich source of both soluble and insoluble fibre that is reported as a traditional medicine in areas of India and China. Its consumption has been shown to provide nutritional benefits. Thus, interest in the incorporation of psyllium into food products is growing. This study was designed to assess how adding psyllium husk mucilage (PHM) at different concentrations impacts on the physical and quality characteristics of yoghurt during storage for 15 days at  $5 \pm 1^\circ\text{C}$ .

**Materials and methods.** Three different concentrations [33.3 (low), 66.6 (medium), and 100 mg/100 g (high)] were used in low-fat yoghurt fortifications. Water-holding capacity, syneresis, pH, titratable acidity, total phenolic content (TPC), DPPH scavenging activity, flavour compounds, texture profile, and sensory properties of resultant yoghurt were analyzed.

**Results.** The addition of PHM to low-fat yoghurts modified the acidification rate, fermentation time and significantly ( $p < 0.05$ ) increased the viscosity, water-holding capacity, further improved the diacetyl concentration during storage. Total phenolic compounds and DPPH scavenging activity were significantly increased by the addition of PHM at a high dose (100 mg/100 g). Furthermore, low-fat yoghurt enriched with PHM had a compact and thick gel structure, together with a homogenous systematic protein aggregation network. Sensorially, low-fat yoghurt with 66.6 mg/100 g PHM revealed the highest sensory attributes score.

**Conclusion.** Overall, PHM extract offers a promising choice as a natural stabilizer for a unique fibre-fortified yoghurt with nutritional value.

**Keywords:** low-fat yoghurt, psyllium husk, physiochemical, antioxidant characteristics, microstructure, and sensory attribute

### INTRODUCTION

The market for functional products is seeing significant growth due to the increasing demand for foods that have additional health-promoting ingredients beyond regular nutrition (Baker et al., 2022). In this

respect, the introduction of dietary fibre-mixed products has been a significant advancement in this area. This is because the addition of dietary fibre to foods is a successful method for improving functionality,

✉ ashwaa2004@agr.cu.edu.eg, <https://orcid.org/0000-0002-1862-4175>

physiological and nutritional feature (Petruzzello et al., 2006). Numerous health advantages of consuming dietary fibre have been reported, including reducing the chance of contracting the following illnesses: heart disease, hypertension, diabetes, obesity, and some gastrointestinal disorders. Also, they may be used as functional additives to enhance the physical and structural features of hydration, oil-holding capacity, viscosity, and texture (Yadav et al., 2016).

Psyllium, scientifically known as *Plantago ovata*, is one of the most important and known forms of fibre, with a wide variety of uses (Amini et al., 2018). Consumption of psyllium has been demonstrated to have nutritional advantages including the ability to lower cholesterol, constipation and diarrhea problems as well as glycemia, and the risk of heart disease. Psyllium is produced mainly for its mucilage content, and is a highly branched arabinoxylan polysaccharide that has a high water-holding and gelling capacity (Fischer et al., 2004). Psyllium mucilage has a long history as a dietary supplement, since it is a rich source of both soluble and insoluble fibre that is also reported to be a medicinally active gel-forming natural polysaccharide (Fischer et al., 2004).

The use of dietary fibre to improve antioxidant activity and sensory acceptance of yoghurts has expanded significantly in recent decades, as customers prefer foods supplemented with natural ingredients rather than synthetic chemical molecules. As a result, significant investments have been made in the health food sector, and many milk-based formulations with various fibres have emerged. In creating formulations for yoghurt enrichment; the enrichment agent added to yoghurt has an effect on the acidification and reduction capacity (Bulut et al., 2019; Alwazeer et al., 2022), so physicochemical, rheological, textural and sensory properties (Bulut et al., 2021) and sensory properties (Bulut et al., 2022) should be taken into consideration of the product during storage. Psyllium mucilage has been widely used in the food, cosmetics, and pharmaceutical industries (Belorio and Gómez, 2020). Considering fibre's benefits, the possibility of developing fibre-fortified yoghurt using psyllium husk as a source of dietary fibre was attempted. However, a wide gap exists in psyllium research as a dietary fibre in dairy food fortification. As a consequence, this study was designed to investigate the effect of using psyllium husk

mucilage (PHM) on the chemical, physical, rheological, and organoleptic properties of low-fat yoghurt.

## MATERIALS AND METHODS

### Materials and chemicals

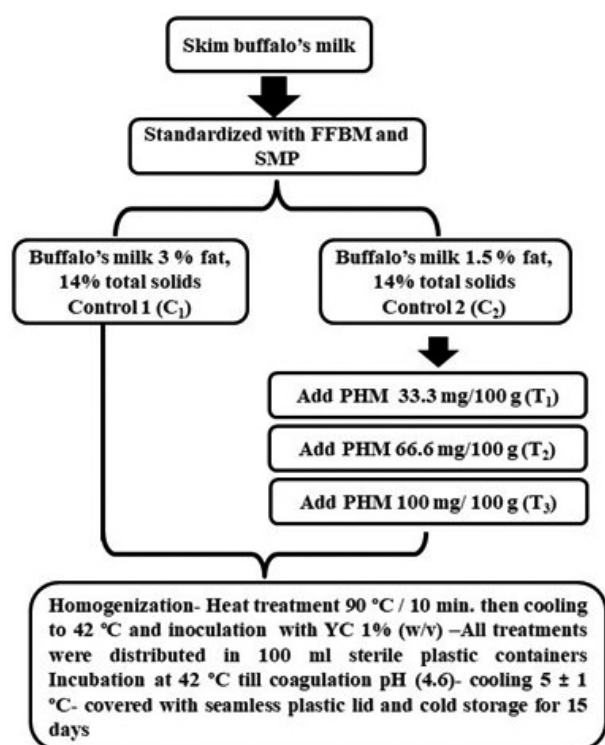
Fresh whole and skimmed buffalo milk was obtained from the Dairy Technology Unit, Faculty of Agriculture, Cairo University, Giza, Egypt. Spray-dried low heat skimmed milk powder (96.2% TS, 0.8% Fat, and pH 6.5 ±0.02) was purchased from Mifad (Misr Food Additives), Egypt. Psyllium husk (PH) was also obtained from the local market, Giza, Egypt. Freeze-dried lactic culture (*Lb. delbrueckii* ssp. *bulgaricus* and *St. thermophilus*) was obtained from Chr. Hansen laboratories (YC-X11, Hoersholm, Denmark). 1,1-diphenyl-2-picrylhydrazyl (DPPH), and Gallic acid was purchased from Sigma-Aldrich (Egyptian International Centre for Import, Cairo, Egypt).

### Extraction of psyllium husk mucilage (PHM)

PHM was extracted according to the procedure described by Antigo et al. (2017). Briefly, sieved powder was extracted as follows: 1.0 g of psyllium husk powder was dispersed and hydrated in water at different ratios namely 1:25, 1:50, 1:75 and 1:100 and was left for 1.2 h at 80°C under constant stirring with a magnetic stirrer. It was very difficult to obtain a suitable extract to be applied from the first and the second ratios, while it was easy with the third and fourth ratios, therefore the 1:75 ratio was chosen, in which 1 ml of extract contained 13.3 mg psyllium husk, three concentrations were applied in this study (2.5 ml, 5 ml and 7.5 ml/100 gm, which was calculated mathematically as 33.3, 66.6 and 100 mg/100 g. Insoluble fractions of psyllium husk extract were removed by filtration using cloth fabric and organza fabric, and the filtrate (or hydrocolloid) was then kept at 5°C until usage. The psyllium mucilage extract was chemically analyzed for its protein, fat, ash, fibre, and total solid contents, while the carbohydrate content was calculated by the differences.

### Low-fat yoghurt preparation

Yoghurt was prepared following the procedures described by Hashim et al. (2009). Five different treatments of yoghurt were manufactured on the laboratory scale, as shown in (Fig. 1). The filling process was



**Fig. 1.** Flow chart for the manufacturing of yoghurt treatments with different psyllium husk mucilage (PHM) amounts (SMP – skimmed milk powder, FFBM – full-fat buffalo milk, YC – yoghurt culture YC-X11)

performed in high-density polyethylene cups covered with seamless plastic lids. The resultant yoghurt cups with final pH 4.6 were then stored in the refrigerator at  $5 \pm 1^\circ\text{C}$  for 15 days. All experiments were conducted in triplicate. All yoghurt samples were analyzed periodically when fresh and on 4, 8, 12 and 15 days of cold storage, except for the texture profile analysis, antioxidant activity and total phenolic content, which were performed when fresh and by the end of storage.

### Physico-chemical properties of psyllium husk powder (PH) and yoghurt

Protein, fat, fibre, moisture, total solids of psyllium husk powder, titratable acidity, total solids, and fat of standardized buffalo milk and yoghurt samples were determined using AOAC methods (AOAC, 2005). The pH values of the yoghurt samples were measured using a digital pH-meter (WTW 720-inolab, D-82362 Weilheim, Germany).

### Determination of total phenolic (TPC)

The TPC of the PHM and the yoghurt samples was measured using the Folin–Ciocalteu assay (Zhang et al., 2019), and the absorbance of the mixture was measured at a wavelength of 725 nm using a spectrophotometer. The results are expressed as the  $\mu\text{g}$  gallic acid equivalents (GAE) per milliliter.

### Radical Scavenging Activity (RSA %) assay

The total free radical scavenging capacity of psyllium husk powder (PH) and yoghurt was evaluated using 2,2-diphenyl-1-picrylhydrazyl DPPH, as previously described by Shori and Baba (2013). A water-soluble extract (WSE) of yoghurts was prepared according to the procedure described by Shori et al., (2013). Briefly, the WSE (1 ml) was mixed with 0.1 mmol/l DPPH (1 ml) dissolved in 95% ethanol. The mixture was shaken and kept at room temperature for 30 min. The absorbance of the resulting solution was measured at 517 nm. Distilled water was used as a blank instead of the sample. Ascorbic acid (0.2 mmol/l) was used as a positive control. The scavenging activity was calculated using the following equation:

$$\text{DPPH radical scavenging activity (\%)} = (A_0 - A_s) / A_0 \times 100$$

where

$A_0$  is the absorbance at 517 nm of blank

$A_s$  is the absorbance at 517 nm of WSE.

It was used for to determine antioxidant activity in vitro by the DPPH method. Radical scavenging activity was calculated and expressed as percentages.

### Texture profile analysis

Textural characteristics of yoghurt samples were detected using the texture analyzer (Multi test 1d Memes in, Food Technology Corporation, Slinfold, W. Sussex, UK), following the method described by Bhat et al. (2018). Briefly, texture profile analysis was carried out by means of a compression test that generated plot of force (N) versus time (s). A 25-mm-diameter perplex cylindrical probe was used to measure textural profile of the yoghurt samples at  $10 \pm 0.5^\circ\text{C}$ . In the first stage, the samples were compressed to 10 mm depth and the speed of the probe was fixed at 30 mm/min. during the pre-test, compression, and relaxation of the samples. The typical textural profile (force–time)

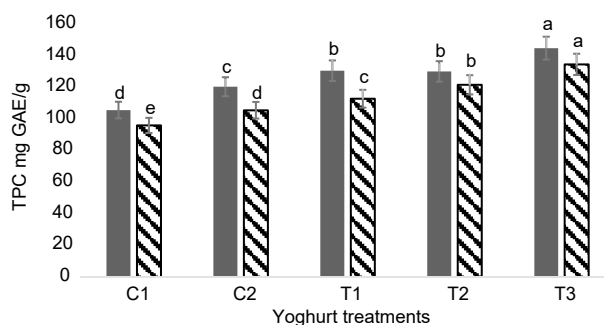




ranged from 0.79 to 0.83% after one day of cold storage, and it increased during cold storage in all treatments, to finish with final values ranging from 0.87 to 1.12%. The increase from the first day to the end of the storage time is compatible with the results reported by Srisuvor et al. (2013) and do Espírito Santo et al. (2012), who fortified yoghurt with banana purée and passion fruit peel powder, respectively. The highest mean values of acidity after 15 days of cold storage were 0.94 for the full-fat control yoghurt  $C_1$  followed by low-fat control yoghurt  $C_2$  then yoghurt with a high and medium concentration of PHM  $T_3$  and  $T_2$ , which recorded 0.90, 0.89 and 0.88%, respectively. Statistically no significant difference ( $p > 0.05$ ) was detected between  $C_2$ ,  $T_2$  and  $T_3$  but they differed significantly ( $p < 0.05$ ) with  $C_1$ . On the other hand,  $T_1$  recorded the lowest mean titratable acidity value at 0.85% with significant difference ( $p < 0.05$ ) than all other treatments). The opposite trend to titratable acidity was observed in pH values. These values decreased after one day of cold storage and ranged from 4.41 for  $C_1$  to 4.44 for  $T_2$ , with a slight fluctuation in  $T_1$ ,  $T_2$ , and  $T_3$  on the 8<sup>th</sup> day, and all values decreased, ending with 4.17 with  $C_1$  and 4.29 for  $T_2$ , while  $C_2$ ,  $T_1$  and  $T_3$  ended with 4.19, 4.17 and 4.12, respectively, after 15 days of cold storage. This finding is in agreement with those of Amiri et al. (2014), who reported that the pH of the low-fat formulations would be higher than that of the full-fat sample due to the dilution of acetic acid in the aqueous phase of the low-fat samples. Furthermore, Amini et al. (2018) stated that high viscosity induced by a high amount of PHM may slow down the mass transfer of energy-providing substrate and, consequently, alleviate the efficiency rate of fermentation or acidification process. The pH values of all treatments decreased slightly during storage. This effect may be attributed to the fibre-buffering capacity of psyllium husk resulting in no influential effect on lactic acid production by starter cultures, in addition to the metabolic activity of the starter culture, which produced lactic acids and other organic acids (Shori et al., 2018).

### Total phenolic content

The total phenolic content of the control and PHM-added samples is presented in Figure 3. The control yoghurts  $C_1$  and  $C_2$  had the lowest value of TPC, standing at 105.53 and 120.28 mg GAE/g, respectively. Yoghurt

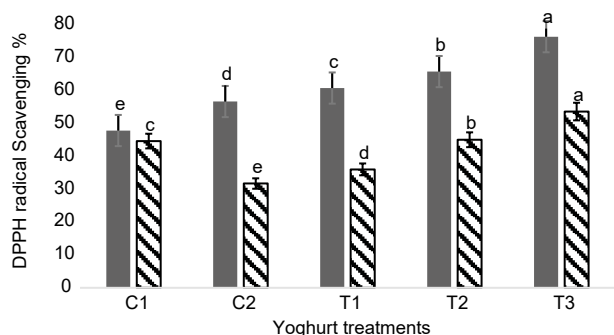


**Fig. 3.** Total phenolic content of different yoghurt treatments on day 1 (■) and day 15 (▨). The data are means  $\pm$ SD; values of each parameter assigned identical letters do not vary significant

with PHM had a considerably greater TPC concentration ( $p < 0.05$ ), which gradually increased as increasing amounts of PHM were added, which might be due to the release of more phenolic compound. At the end of cold storage, TPC concentration significantly ( $p < 0.05$ ) decreased in all treatments to reach 95.83, 105.41, 112.70, 121.51, and 134.42 mg GAE/g for  $C_1$ ,  $C_2$ ,  $T_1$ ,  $T_2$  and  $T_3$ , respectively. Similar findings were obtained by Jambi (2018) and Muniandy et al. (2016), who reported that the TPC of yoghurt fortified with date seed powder (a rich source of polyphenols) decreased during storage. This may be due to the decomposition of polymeric phenolics in the presence of lactic acid bacteria during refrigerated storage.

### Radical scavenging activity (RSA %) assay

The antioxidant capacity of yoghurt was determined using the DPPH radical scavenging method and the results are illustrated in Figure 4. The highest significant ( $p < 0.05$ ) RSA% was noted in yoghurt samples fortified with a high concentration (100 mg) of PHM either on day 1 or at the end of cold storage and the lowest ( $p < 0.05$ ) value was observed in yoghurt without PHM ( $C_1$ ) on day 1. These findings are attributed to the fortification of yoghurt with PHM, which contains considerable phytochemical contents as reported by Thompson et al. (2007). While low-fat yoghurt without PHM ( $C_2$ ) recorded the lowest DPPH scavenging activity after two weeks of cold storage. In general, yogurt products exhibit antioxidant activities mainly due to their bioactive peptide contents produced by the action of lactic acid bacterial culture, as reported



**Fig. 4.** DPPH radical scavenging activity of different yoghurt treatments on days 1 and 15. C<sub>1</sub> 3.0% fat without PHM; C<sub>2</sub> 1.5% fat without PHM; T<sub>1</sub>, T<sub>2</sub>, T<sub>3</sub> are low-fat yoghurt with 33.3 mg, 66.6 mg and 100 mg PHM, respectively. Data are means ±SD; values of each parameter assigned identical letters do not vary significant

by Demirci et al. (2017). This may explain the antioxidant activity of the control yogurt without PHM supplementation. As expected, the DPPH was significantly increased and in a direct and proportional relationship with the increase in the concentration of PHM

as reported by Sah et al. (2015). In parallel with these findings, Xu et al. (2016) and Demirci et al. (2017) reported an increase in the antioxidant activity of probiotic yogurt due to the high polyphenol content in rice bran, pineapple waste powder. The reduction in antioxidant activity during storage may be due to the degradation of the phenolic compound as a result of the changes in microbial activity during storage and/or increasing milk protein-polyphenol interaction (Yildiz et al., 2009).

### Texture profile analysis

Texture profile analysis (TPA) is a technique commonly used in the food industry to assess the texture attitude of food, as it might reveal sensory qualities. Furthermore, texture is an important factor in determining the quality of food products, and it is fully influenced by food composition (Fundo et al., 2018). The effect that adding PHM has on the texture attributes is listed in Table 3. Full-fat yoghurt C<sub>1</sub> was characterized by higher significant values of hardness, adhesiveness, gumminess, and chewiness when compared with the low-fat one (C<sub>2</sub>). On the other hand, springiness and

**Table 3.** Texture profile analysis of different yoghurt treatments\* fortified with PHM

	Storage days	C <sub>1</sub>	C <sub>2</sub>	T <sub>1</sub>	T <sub>2</sub>	T <sub>3</sub>
Hardness, N	1	11.14 ±0.11 <sup>b</sup>	4.20 ±0.02 <sup>c</sup>	8.13 ±0.01 <sup>d</sup>	9.30 ±0.02 <sup>c</sup>	7.47 ±0.01 <sup>c</sup>
	15	12.00 ±0.01 <sup>a</sup>	11.00 ±0.09 <sup>b</sup>	5.93 ±0.05 <sup>f</sup>	8.37 ±0.01 <sup>d</sup>	5.80 ±0.00 <sup>g</sup>
Adhesiveness, N s <sup>-1</sup>	1	0.98 ±0.01 <sup>c</sup>	0.87 ±0.01 <sup>f</sup>	1.03 ±0.01 <sup>d</sup>	1.20 ±0.01 <sup>b</sup>	1.05 ±0.00 <sup>c</sup>
	15	1.07 ±0.02 <sup>d</sup>	0.88 ±0.0 <sup>f</sup>	1.11 ±0.00 <sup>c</sup>	1.47 ±0.01 <sup>a</sup>	1.25 ±0.00 <sup>b</sup>
Cohesiveness	1	0.51 ±0.01 <sup>c</sup>	0.82 ±0.01 <sup>b</sup>	0.87 ±0.00 <sup>a</sup>	0.55 ±0.00 <sup>c</sup>	0.52 ±0.01 <sup>d</sup>
	15	0.43 ±0.01 <sup>h</sup>	0.53 ±0.00 <sup>d</sup>	0.49 ±0.01 <sup>f</sup>	0.51 ±0.00 <sup>c</sup>	0.47 ±0.01 <sup>g</sup>
Gumminess, N	1	5.77 ±0.03 <sup>a</sup>	3.47 ±0.02 <sup>h</sup>	5.20 ±0.01 <sup>b</sup>	4.20 ±0.00 <sup>e</sup>	3.80 ±0.02 <sup>g</sup>
	15	5.20 ±0.02 <sup>b</sup>	4.77 ±0.05 <sup>c</sup>	4.67 ±0.01 <sup>d</sup>	4.02 ±0.01 <sup>f</sup>	2.80 ±0.01 <sup>i</sup>
Springiness	1	7.93 ±0.01 <sup>c</sup>	8.16 ±0.01 <sup>b</sup>	8.19 ±0.02 <sup>a</sup>	6.93 ±0.01 <sup>d</sup>	5.58 ±0.03 <sup>g</sup>
	15	5.45 ±0.010 <sup>i</sup>	5.18 ±0.00 <sup>j</sup>	6.66 ±0.01 <sup>c</sup>	6.04 ±0.01 <sup>f</sup>	5.30 ±0.01 <sup>h</sup>
Chewiness, N	1	45.51 ±2.15 <sup>a</sup>	28.02 ±1.35 <sup>d</sup>	31.58 ±1.35 <sup>b</sup>	29.13 ±1.15 <sup>c</sup>	21.31 ±1.21 <sup>g</sup>
	15	28.23 ±1.4 <sup>d</sup>	29.31 ±1.41 <sup>c</sup>	27.08 ±0.95 <sup>c</sup>	24.89 ±1.25 <sup>f</sup>	17.32 ±1.30 <sup>h</sup>

\*Abbreviations are: C<sub>1</sub> Control, 3.0% fat without PHM; C<sub>2</sub> Control, 1.5% fat without PHM, T<sub>1</sub>, T<sub>2</sub>, T<sub>3</sub> are low-fat yoghurt with 33.3 mg, 66.6 mg and 100 mg PHM, respectively. Data means ±SD; values of each parameter with the same superscript letters do not vary significantly.

cohesiveness recorded lower values when compared with C<sub>2</sub>. Upon fortification with PHM, hardness values increased in all treatments when fresh, with no direct relationship with the addition ratio. By the end of storage, the hardness values had decreased significantly in all treatments. This decrease in hardness could be due to the disrupting effect of fibre on the gel and may be justified with the viscosity effect of PHM. In higher concentrations, PHM might show higher viscosity and thus may have a film forming action, which restricts the interaction of culture medium and milk components and desired texture of yogurt could not be attained at higher levels of PHM supplementation. Hence, at higher levels, PHM decreased the hardness of yoghurt. While with adhesiveness, the values increased in direct relationship with the PHM concentration added. This increase in adhesiveness values might be due to the effect of the branches of hydrocolloids that exist in the PHM, which leads to adhesion strength. On the other hand, cohesiveness values decreased as PHM concentration increased. This decrease might be due to the negative correlation between adhesiveness and cohesiveness parameters. As for gumminess, springiness and chewiness, the recorded values in T<sub>1</sub> increased when compared with C<sub>2</sub> and then decreased

as the addition ratio increased when fresh. By the end of the storage period, all parameters measured and, in all concentrations, added had decreased significantly. These results are compatible with the results of viscosity and WHC and with what was previously reported by Hussein et al. (2011) and Bhat et al. (2018).

#### Acetaldehyde and diacetyl content

The changes in the flavour compounds of yoghurt samples, as measured by the concentration of acetaldehyde and diacetyl through the storage period as affected by the ratio of PHM added, are given in Table 4. There was a fluctuation in the results due to the volatile nature of both compounds. Where the higher addition ratio of PHM in T<sub>3</sub> led to a significant increase in acetaldehyde content as compared with the control yoghurt samples C<sub>1</sub>, C<sub>2</sub>, and T<sub>1</sub>&T<sub>2</sub>. This increment was concentration-dependent. During cold storage, its values decreased significantly with a clear fluctuation in all treatments. These results may be due to the conversion of acetaldehyde to ethanol as a result of the presence of enzyme alcohol dehydrogenase produced by yoghurt cultures (Güler et al., 2009) or its oxidation to acetic acid (Guzel-Seydim et al., 2005). Diacetyl clearly showed an opposite trend to that of

**Table 4.** Acetaldehyde and diacetyl content of yoghurt treatments fortified with PHM

	Storage days	C <sub>1</sub>	C <sub>2</sub>	T <sub>1</sub>	T <sub>2</sub>	T <sub>3</sub>
Acetaldehyde, ppm	1	99.57 ±0.31 <sup>c</sup>	121.17 ±0.60 <sup>c</sup>	111.45 ±0.59 <sup>d</sup>	125.79 ±0.61 <sup>b</sup>	136.10 ±0.37 <sup>a</sup>
	4	88.20 ±0.26 <sup>c</sup>	82.17 ±0.38 <sup>d</sup>	81.10 ±0.29 <sup>c</sup>	113.5 ±0.52 <sup>a</sup>	98.87 ±0.43 <sup>b</sup>
	8	108.13 ±0.50 <sup>b</sup>	106.42 ±0.48 <sup>c</sup>	96.24 ±0.34 <sup>d</sup>	91.35 ±0.4 <sup>c</sup>	117.41 ±0.61 <sup>a</sup>
	12	52.01 ±0.20 <sup>c</sup>	67.92 ±0.13 <sup>b</sup>	62.96 ±0.23 <sup>c</sup>	61.45 ±0.32 <sup>d</sup>	104.81 ±0.60 <sup>a</sup>
	15	58.22 ±0.16 <sup>c</sup>	101.14 ±0.41 <sup>b</sup>	103.06 ±0.58 <sup>a</sup>	98.55 ±0.41 <sup>c</sup>	90.30 ±0.31 <sup>d</sup>
Diacetyl, ppm	1	20.0 ±0.04 <sup>a</sup>	18.0 ±0.03 <sup>b</sup>	14.0 ±0.01 <sup>c</sup>	10.0 ±0.01 <sup>d</sup>	7.0 ±0.01 <sup>e</sup>
	4	18.0 ±0.01 <sup>a</sup>	11.0 ±0.02 <sup>c</sup>	14.0 ±0.00 <sup>c</sup>	12.0 ±0.02 <sup>d</sup>	15.0 ±0.01 <sup>b</sup>
	8	15.0 ±0.04 <sup>c</sup>	13.0 ±0.02 <sup>d</sup>	15.5 ±0.02 <sup>b</sup>	12.0 ±0.00 <sup>c</sup>	18.5 ±0.01 <sup>a</sup>
	12	6.0 ±0.01 <sup>c</sup>	15.5 ±0.01 <sup>b</sup>	14.5 ±0.01 <sup>c</sup>	12.0 ±0.00 <sup>d</sup>	18.0 ±0.02 <sup>a</sup>
	15	17.0 ±0.05 <sup>c</sup>	17.0 ±0.01 <sup>c</sup>	17.0 ±0.01 <sup>c</sup>	21.5 ±0.03 <sup>a</sup>	19.0 ±0.03 <sup>b</sup>

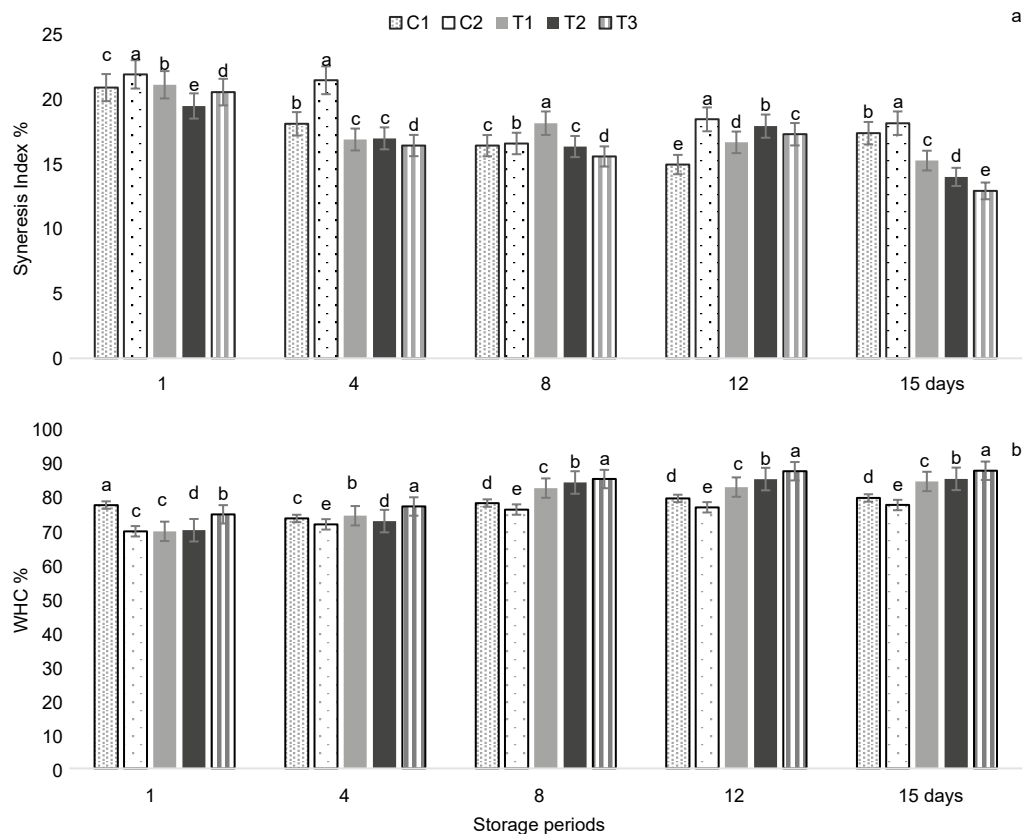
\*Abbreviations are: C<sub>1</sub> Control, 3.0% fat without PHM; C<sub>2</sub> Control, 1.5% fat without PHM; T<sub>1</sub>, T<sub>2</sub>, T<sub>3</sub> are low-fat yoghurt with 33.3 mg, 66.6 mg and 100 mg PHM, respectively. Data are means ±SD, values with different superscript lowercase letters in the same row are significantly different.



acetaldehyde, as the diacetyl values decreased in all treatments when compared to the control sample (C<sub>1</sub>) and this decrease was found in direct relationship to the concentration added of PHM on day 1 of cold storage. During cold storage, diacetyl content decreased gradually in control samples C<sub>1</sub>, C<sub>2</sub> and increased by the end of storage period to reach 17 ppm. On the other hand, diacetyl content gradually increased in PHM treatments (T<sub>1</sub>, T<sub>2</sub>, T<sub>3</sub>) to reach 17, 21.5 and 19 ppm, respectively. The decline in the content of diacetyl may be due to the slow conversion of diacetyl to acetoin, as reported by Driessen and Puhan (1988), while Sahan et al. (2008) and Hassan et al. (2015) demonstrated that the addition of guar gum to yoghurt led to a slight increase in the diacetyl concentration of yoghurt samples during the storage time.

### Syneresis Index and WHC

The changes that occurred in the syneresis value (%) and water-holding capacity (WHC) of low-fat yoghurts fortified with PHM as compared with traditional ones were noted on days 1, 4, 8 and 12, and after 15 days of cold storage (Fig. 5). It is obvious from the data presented here that the syneresis values were higher in all yoghurt samples when fresh (after 24 h of cold storage) and it began to decline significantly ( $p < 0.05$ ) but gradually during cold storage until it ended in low values, especially in T<sub>2</sub> and T<sub>3</sub>. It should be noted that at a lower temperature, stronger bonds can be formed between the particles of the gel, and it is possible that their number increases. This can be assumed when swollen particles become linked to each other in a broader space. On days 8, 12 and 15, there were significant ( $p < 0.05$ ) differences between the



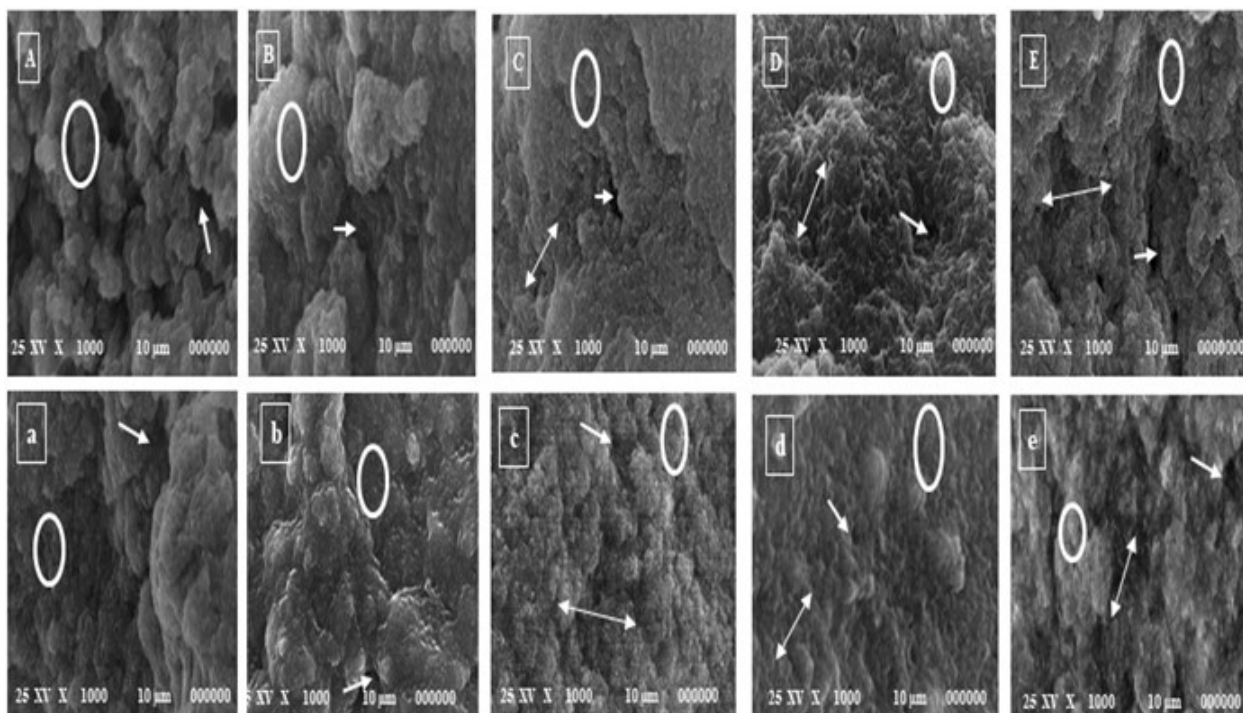
**Fig. 5.** Syneresis Index (a) and water-holding capacity (WHC; b) of different yoghurt treatments, data means  $\pm$ SD; values of each parameter assigned identical letters do not vary significantly

control samples C<sub>1</sub> and C<sub>2</sub> (which showed the highest rate of syneresis) and the samples with added psyllium husk mucilage. A higher level of syneresis was found in yoghurts with lower fat content, this result may be due to the effect of the fat ratio on the syneresis value, so the low-fat products due to body and appearance defects are usually produced with the addition of some ingredients as fibre in order to improve the textural properties. The following happened: as the addition of psyllium husk mucilage led to a decrease in the syneresis values with very clear significant differences from the two control samples. This is due to the role of fibre in trapping the water inside the yoghurt curd or inside the protein matrix. These results are in agreement with what was reported by Damin and Olteanu (2014), who used pea fibre, and with Ünal et al. (2003), who used locust bean gum. Similar reductions in whey syneresis among yoghurt samples have been reported by enriching yoghurts with quince seed mucilage, cress

seed mucilage, and flaxseed mucilage (Razmkhah et al., 2010). An increasing trend in WHC was observed in low-fat yoghurts fortified with PHM compared with control samples. Moreover, yoghurts fortified with PHM had significant ( $p < 0.05$ ), higher WHC during storage. This increase in the water-holding capacity of fortified yoghurt is due to the higher water-holding capacity of soluble fibre in the mucilage, which also provides strength to the yoghurt coagulum network and aids water retention. In this respect, Yekta and Ansar (2019) found that the addition of Jujube mucilage as a potential stabilizer in stirred yoghurt reinforced the WHC of low-fat yoghurt.

#### Microstructure visualization

The microstructures of yoghurt treatments on day 1 and after 15 days of cold storage are shown in Figure 6. Different yoghurt treatments' scanning electron micrographs revealed variations in casein micelles,



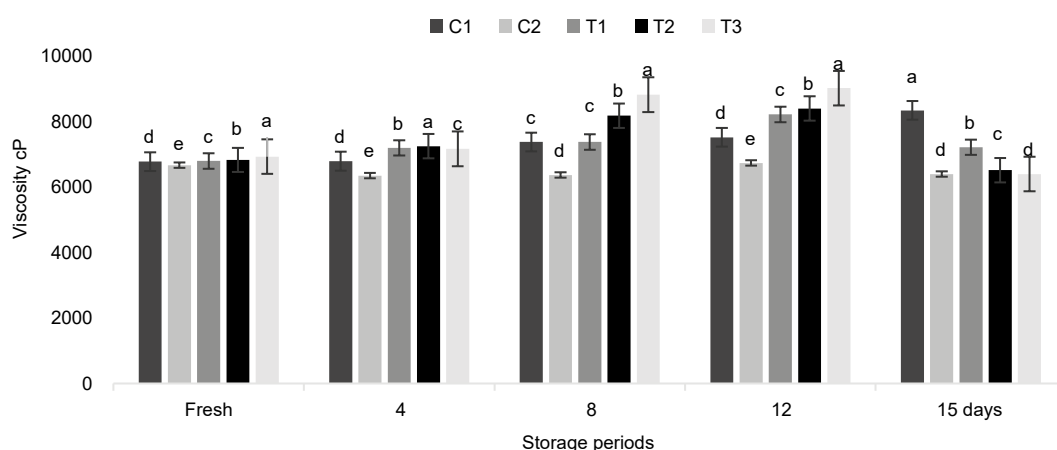
**Fig. 6.** Scanning electron micrographs (1000×) of yoghurt treatments; capital letters for fresh yoghurt, while small letters for stored yoghurt treatments at 4°C for 15 days (A, a) full-fat control yoghurt, (B, b) low-fat control yoghurt, (C, c; D, d and E, e) low-fat yoghurt fortified with 33.3, 66.6, 100 mg PHM /100 gm, respectively. Void space contains whey (marked with white arrows), PHM effect on protein aggregates and structure marked with double arrows and casein network marked with white ovals. Scale bar is 10 µm

wey aggregation, and pore size. As shown in Figure 6, a compact and dense protein matrix (grey area) formed a continuous phase that was infiltrated by an amorphous system of voids, with spherical fat globules of various sizes dispersed in the continuous phase and distributed throughout the protein matrices. The gel network in the full-fat control sample  $C_1$  was irregular, with large pores and short individualized casein filaments. The images showed heterogeneous in the clusters or in pore size. Additionally, there were some openings and fat globules; fewer pores were detected in  $C_2$ . The images C, D, and E showed that the PHM effect on protein aggregates leads to the formation of a fibrous structure and a decrease in the number and diameter of voids. A more filament structure and compact networks were obtained with increasing PHM proportions, resulting in a denser network and a lower tendency to syneresis. It is worth noting that the results of microstructure were in harmony with the syneresis index and TPC of the resultant yogurt, since increasing PHM addition led to a significant decrease in whey drainage. Further, the addition of PHM, which contains phenolic components, may lead to greater retention of whey in the yoghurt structure. In this respect, Oliveira et al. (2015) reported that dairy products incorporated with some polyphenol-rich compounds have improved physical properties resulting from the interaction between polyphenols and proteins. In addition, it might be attributed to the combined interaction

of PHM and casein micelle via electrostatic and hydrophobic interaction in the pH range of 3.5–4.8, as reported by Tuinier et al. (2002). This microstructural arrangement results in less protein rearrangement and reduced syneresis susceptibility, making yoghurt fortified with PHM more stable during storage (Fig. 6 c, d, and e). In addition, the microstructure of yoghurt fortified with PHM during storage reveals a homogeneous systematic protein aggregation network and the protein matrix appeared as a smooth continuous phase of aggregated micelles with a compact fusion and a dense structure containing fewer voids. Moreover, the presence of PHM obscures the finer details of pores and strands. The diameter of these pores varies considerably with small pores in milk supplemented with PHM. The characteristics described in these SEM images are consistent with Dong et al. (2022), who stated that microstructural arrangement results in less protein rearrangement and reduced syneresis susceptibility, making yogurt supplied with soluble dietary fibre (SDF) more stable during storage. Also, the fact that complex micelle aggregations of adsorbed SDFs and casein form large networks might contribute to the stability of the yoghurt.

### Apparent viscosity

Yoghurt's apparent viscosity was evaluated over 15 days of refrigerated storage and the data are shown in Figure 7. Apparent viscosity is affected by different



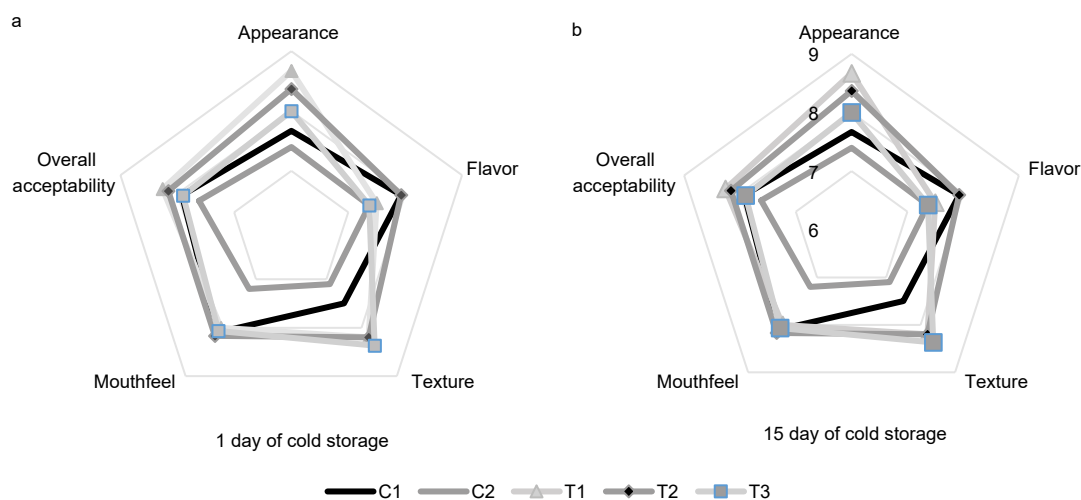
**Fig. 7.** Apparent viscosity of traditional and fortified low-fat yoghurt as affected by psyllium husk mucilage (PHM) percentages. Data means  $\pm$ SD; values of each parameter assigned identical letters do not vary significantly

factors, such as milk composition, heat treatment of milk, and additives. An overall look at the presented data clearly indicates that the apparent viscosity of the full-fat control yoghurt  $C_1$  recorded higher values than the low-fat control  $C_2$  without psyllium husk when fresh (one day cold storage), while treatments  $T_1$ ,  $T_2$  and  $T_3$  recorded higher values, mainly due to the effect of PHM. The higher viscosity value of  $C_1$  is due to the effect of high fat content in this sample. During storage, the viscosity value increased significantly ( $p < 0.05$ ) in all treatments till the end of storage except  $T_3$ , which recorded lower values starting from the twelfth day. This might be due to the higher concentration of psyllium husk (100 mg), which is likely to lead to an interaction between protein and fibre, and which leads to the formation of a weak gel. It is worth noting that the results of texture profile analysis (TPA) were in harmony with apparent viscosity. Since all parameters of  $T_3$  had decreased, the hardness value, which was lower at the end of the storage period, led to a decrease in viscosity value. Preliminary experiments, on the other hand, have shown that increasing PHM beyond the reasonable limit leads to counterproductive results. From the data presented, one can observe that the addition of PHM led to a pronounced increment in yoghurt viscosity in all treatments and the increment was

not proportional to the amount of PHM added, as the highest increment was recorded with  $T_1$  followed by  $T_2$  then  $T_3$ . These results are in conformity with those of Sahan et al. (2008), who reported that the addition of wheat bran led to a significant increase in the apparent viscosity of yoghurt. Furthermore, Aryana (2006) reported that the apparent viscosity of fibre-fortified yoghurts was comparable to the control when different fibres were added separately at the 0.02% level.

### Sensory attributes

Sensory attributes were evaluated, namely appearance, flavour, texture, mouthfeel, and overall acceptability. Texture was evaluated by both visual controls with a spoon or mouthfeel. The results for the experimental yoghurt are presented in Figures 8a (d 1), and b (d 15). Control sample  $C_2$  had the significantly lowest preference values in all sensory perceptions. Less significant differences were detected between  $C_1$ ,  $T_1$  and  $T_3$  in both flavour and mouthfeel but all were better with a significant difference than  $C_2$ . In contrast, the addition of psyllium husk mucilage obviously exhibited a positive effect on all sensory attributes of their respective yoghurt treatments. Moreover, panelists described the yoghurt fortified with psyllium husk mucilage 66.6 mg ( $T_2$ ) by its excellent smooth texture and



**Fig. 8.** A hedonic scale of traditional and fortified low-fat yoghurt as affected by psyllium husk mucilage (PHM) percentages (a) fresh yoghurts, (B) 15-day-old yoghurts; ( $C_1$ ) control full-fat yoghurt ( $C_2$ ) control low-fat;  $T_1$ ,  $T_2$ ,  $T_3$  are low-fat yoghurt with 33.3 mg, 66.6 mg and 100 mg PHM, respectively

mouthfeel. Our results agree with those of Hussein et al. (2011), who found that the addition of polysaccharides (fibre) improves body, texture, appearance, and mouthfeel and retards the syneresis of low-fat yoghurt. It is worth noting that in our study, no off-flavours were detected in any of the experimental yoghurt as indicated by the assessors.

## CONCLUSION

The aim of this work was to fortify low-fat (1.5% fat) yoghurt with fibre in the form of psyllium husk and to study the effect of psyllium husk mucilage on some properties of the resultant yoghurt. The findings showed that fortifying yoghurt with either 66.6 mg/100 g (T<sub>2</sub>) or 100 mg/100 g (T<sub>3</sub>) psyllium husk mucilage had a positive effect on the texture properties, water-holding capacity and radical scavenging activity of resultant yogurt. Additionally, it enhanced the viscosity and showed high acceptability ratings overall with no significant differences between both treatments. Therefore, from the economic point of view, the addition of psyllium husk mucilage at 66.6 mg/100 g milk (T<sub>2</sub>) is recommended for the development of fibre-fortified yoghurt as a novel ingredient for improving the properties of low-fat yoghurt. Also, psyllium husk mucilage to fortify yoghurt is a promising tool to improve the physiochemical, rheological and organoleptic characteristics of low-fat yoghurt by increasing the uptake of antioxidants by consumers. Further studies are needed that apply PHM in other fermented dairy products like low-fat cheese, allowing manifold applications with added market value.

## DATA AVAILABILITY

Datasets from the current study are available from the corresponding author upon request.

## DECLARATIONS

### Ethical Approval

Not applicable.

### Competing Interests

The authors declare that they have no conflicts of interest.

## OPEN ACCESS

This article is licensed under a Creative Commons Attribution 4.0 International License, which permits use, sharing, adaptation, distribution and reproduction in any medium or format, as long as you give appropriate credit to the original author(s) and the source, provide a link to the Creative Commons licence, and indicate if changes were made. The images or other third party material in this article are included in the article's Creative Commons licence, unless indicated otherwise in a credit line to the material. If material is not included in the article's Creative Commons licence and your intended use is not permitted by statutory regulation or exceeds the permitted use, you will need to obtain permission directly from the copyright holder. To view a copy of this licence, visit <http://creativecommons.org/licenses/by/4.0/>

## REFERENCES

- Alwazeer, D., Bulut, M., Tunçtürk, Y. (2020). Fortification of milk with plant extracts modifies the acidification and reducing capacities of yoghurt bacteria. *Int. J. Dairy Technol.*, 73(1), 117–125. <https://doi.org/10.1111/1471-0307.12643>
- Amini, S., Yousefi, S., Moghari, A. A. (2018). Development and quality characterization of liquid Kashk by incorporating psyllium (*Plantago ovata* Forsk) hydrocolloid gel. *J. Food Meas. Charact.*, 12(3), 1669–1677. <https://doi.org/10.1007/s11694-018-9782-8>
- Amiri, S. S., Aalami, M. S., Geefan, B., Ranjbar, A. (2014). Application of Isfarzeh seed (*Plantago ovate* L.) mucilage as a fat mimetic in mayonnaise. *J. Food Sci. Technol.*, 51(10), 2748–2754. <https://doi.org/10.1007/s13197-012-0796-7>
- Antigo, J. L. D., Bergamasco, R., de, C., Madrona, G. S. (2017). Functional properties of chia and psyllium mucilage”, XXI Simposio Nacional de Bioprocessos and XII Simposio de Hidrolise Enzimática de Biomassa, Aracajú. Available at: <https://proceedings.science/sinaferm/sinaferm-2017/papers/functional-properties-of-chia-and-psyllium-mucilage?lang=en>
- AOAC (Association of Official Analytical Chemists) (2005). Official methods of analysis (17th ed.). Washington DC: AOAC.
- Aryana, K. J. (2006). Probiotic, fibre fortified, fat free plain set yoghurt. *Michwissenschaft*, 61(3), 312–315.

- Baker, M. T., Lu, P., Parrella, J. A., Leggette, H. R. (2022). Consumer Acceptance toward Functional Foods: A Scoping Review. *Int. J. Env. Res. Pub. Health*, 19(3), 1217. <https://doi.org/10.3390/ijerph19031217>
- Belorio, M., Gómez, M. (2020). Psyllium: a useful functional ingredient in food systems. *Crit. Rev. Food Sci. Nutr.*, 62(2), 527–538. <https://doi.org/10.1080/10408398.2020.1822276>
- Bhat, S. V., Deva, A. M., Amin, T. (2018). Physicochemical and textural properties of yogurt fortified with psyllium (*Plantago ovate*) husk. *J. Food Proc. Preserv.*, 42, 13425. <https://doi.org/10.1111/jfpp.13425>
- Bulut, M., Adal, E., Aktar, T. (2022). Plant protein enrichment effect on the physical, chemical, microbiological, and sensory characteristics of yogurt. *J. Food Proc. Preserv.*, 46(8), e16865. <https://doi.org/10.1111/jfpp.16865>
- Bulut, M., Tunçtürk, Y., Alwazeer, D. (2019). The Role of Redox Potential on Aroma Components of Yoghurt. *Uluslararası Gap Trimm Ve Hayvancılık Kongresi*, 25–27.
- Bulut, M., Tunçtürk, Y., Alwazeer, D. (2021). Effect of fortification of set-type yoghurt with different plant extracts on its physicochemical, rheological, textural and sensory properties during storage. *Int. J. Dairy Technol.*, 74(4), 723–736. <https://doi.org/10.1111/1471-0307.12803>
- Damian, C., Olteanu, A. (2014). Influence of dietary fibre from pea on some quality characteristics of yoghurts. *J. Agroalim. Proc. Technol.*, 20(2), 156–160.
- Deepika, S. K., Deshpande, H. W., Bhate, M. A. (2017). Studies on Exploration of Psyllium Husk as Prebiotic for the Preparation of Traditional Fermented Food Buttermilk. *Int. J. Curr. Microbiol. App. Sci.*, 6(7), 3850–3863.
- Demirci, T., Aktaş, K., Sözeri, D., Öztürk, H.İ., Akın, N. (2017). Rice bran improve probiotic viability in yoghurt and provide added antioxidative benefits. *J. Funct. Foods*, 36, 396–403. <https://doi.org/10.1016/j.jff.2017.07.019>
- Do Espírito Santo, A. P., Perego, P., Converti, A., Oliveira, M. N. (2012). Influence of milk type and addition of passion fruit peel powder on fermentation kinetics, texture profile and bacterial viability in probiotic yoghurts. *LWT – Food Sci. Technol.*, 47(2), 393–399. <https://doi.org/10.1016/j.lwt.2012.01.038>
- Dong, R., Liao, W., Xie, J., Chen, Y., Peng, G., Xie, J., Sun, N., Liu, S., Yu, C. Y. Q. (2022). Enrichment of yogurt with carrot soluble dietary fibre prepared by three physical modified treatments: Microstructure, rheology and storage stability. *Innov. Food Sci. Emerg. Technol.*, 75, 102901. <https://doi.org/10.1016/j.ifset.2021.102901>
- Driessen, F. M., Puhán, Z. (1988). Technology of mesophilic fermented milk. In: *Fermented milks. Science & Technology*. Brussels: International Dairy Federation, International Dairy Federation Bulletin.
- Fernández-García, E., McGregor, J. U. (1997). Fortification of sweetened plain yogurt with insoluble dietary fibre. *Z. Lebensm. Unters Forsch.*, 204, 1997, 433, 437.
- Fischer, H. M., Nanxiong, Y., Ralph, R. G. J., Anderson, L., Marletta, J. A. (2004). The gel-forming polysaccharide of psyllium husk (*Plantago ovata* Forsk). *Carbohydr. Res.*, 339, 2009–2017. <https://doi.org/10.1016/j.carres.2004.05.023>
- Fundo, J. F., Silva, C. L. M. (2018). Mikrostruktur, composition and their relationship with molecular mobility, food quality and stability. In: S. Devahastin (ed.), *Woodhead Publishing Series in Food Science, Technology and Nutrition* (pp. 29–41). Amsterdam: Elsevier. <https://doi.org/10.1016/B978-0-08-100764-8.00002-2>
- Guzel-Seydim, S., Guzel, Z.B., Sezgin, E., Seydim, A.C. (2005). Influences of exopolysaccharide producing cultures on the quality of plain set type yogurt. *Food Control*, 16, 205–209. <https://doi.org/10.1016/j.foodcont.2004.02.002>
- Güler-Akin, M. B., Serdar Akin, M., Korkmaz, A. (2009). Influence of different exopolysaccharide-producing strains on the physicochemical, sensory and syneresis characteristics of reduced-fat stirred yoghurt. *Int. J. Dairy Technol.*, 62, 422–430. <https://doi.org/10.1111/j.1471-0307.2009.00499.x>
- Hashim, I. B., Khalil, A. H., Afifi, H. S. (2009). Quality characteristics and consumer acceptance of yogurt fortified with date fibre. *J. Dairy Sci.*, 92(11), 5403–5407. <https://doi.org/10.3168/jds.2009-2234>
- Hassan, L. K., Haggag, H. F., Elkalyoubi, M. H., El-Aziz, M. A., El-Sayed, M. M., Sayed, A. F. (2015). Physicochemical properties of yoghurt containing cress seed mucilage or guar gum. *Ann. Agric. Sci.*, 60, 21–28. <https://doi.org/10.1016/j.aos.2014.11.021>
- Hassan, A. A., Elenany, Y. E., Nassrallah, A., Cheng, W., Abd El-Maksoud, A. A. (2022). Royal jelly improves the physicochemical properties and biological activities of fermented milk with enhanced probiotic viability. *LWT – Food Sci. Technol.*, 115, 112912. <https://doi.org/10.1016/j.lwt.2021.112912>
- Hussein, M. M., Fatma, A. M., Hassan, H. H., Abdel, D., Salama, A., Enab, A. K., El-Galil, A. (2011). Utilization of some plant polysaccharides for improving yogurt consistency. *Ann. Agric. Sci.*, 56, 97–103. <https://doi.org/10.1016/j.aos.2011.05.010>
- Jambi, H. A. (2018). Evaluation of physio-chemical and sensory properties of yoghurt prepared with date pits powder. *Curr. Sci. Int.*, 7, 1–9.

- Molaveisi, M., Beigbabaee, A., Akbari, E., Noghabi, M. S., Mohamadi, M. (2019). Kinetics of temperature effect on antioxidant activity, phenolic compounds and color of Iranian jujube honey. *Heliyon*, 21, 5(1), e01129. <https://doi.org/10.1016/j.heliyon.2019.e01129>
- Mehanna, N. M., Ibrahim, E. M., El-Nawasany, L. I. (2013). Impact of some hydrocolloids on the physical characteristics and quality of non-fat yoghurt. *Egyptian J. Dairy Sci.*, 41, 163.
- Muniandy, P., Shori, A. B., Baba, A. S. (2016). Influence of green, white and black tea addition on the antioxidant activity of probiotic yogurt during refrigerated storage. *Food Package Shelf Life*, 8, 1–8.
- Oliveira, A., Alexandre, E. M., Coelho, M., Lopes, C., Almeida, D. P., Pintado, M. (2015). Incorporation of strawberries preparation in yoghurt: impact on phytochemicals and milk proteins. *Food Chem.*, 171, 370–378. <https://doi.org/10.1016/j.foodchem.2014.08.107>
- Pang, Z., Deeth, H., Prakash, S., Bansal, N. (2016). Development of rheological and sensory properties of combinations of milk proteins and gelling polysaccharides as potential gelatin replacements in the manufacture of stirred acid milk gels and yogurt. *J. Food Eng.*, 169, 27–37. <https://doi.org/10.1016/j.jfoodeng.2015.08.007>
- Petruzzello, L., Iacopini, F., Bulajic, M., Shah, S., Costamagna, G. (2006). Review article: uncomplicated diverticular disease of the colon. *Aliment. Pharmacol. Ther.*, 23, 1379–1391. <https://doi.org/10.1111/j.1365-2036.2006.02896.x>
- Razmkhah, S., Razavi, S. M. A., Behzad, K. H., Mazaheri, T. M. (2010). Investigating the effect of pectin, gum composition of marv and basil seeds on physicochemical and sensory characteristics of yogurt without fat. *J. Food Sci. Technol.*, 6(1), 33–45.
- Ross, C. F., Hoyer, C. J., Fernandez-Plotka, V. C. (2011). Influence of heating on the polyphenolic content and antioxidant activity of grape seed flour. *J. Food Sci.*, 76(6), C884–90, 22417486. <https://doi.org/10.1111/j.1750-3841.2011.02280.x>
- Sahan, N., Yasar, K., Hayaloglu, A. A. (2008). Physical, chemical and flavor quality of non-fat yogurt as affected by a  $\beta$ -glucan hydro colloidal composite during storage. *Food Hydrocoll.*, 22, 1291–1297. <https://doi.org/10.1016/j.foodhyd.2007.06.010>
- Sakr, H. S. A. (2019). Study on supplementation of non-fat yoghurt with psyllium. *J. Food Dairy Sci.*, 10(9), 303–308. DOI: 10.21608/JFDS.2019.54524
- Shah, A. R., Sharma, P., Gour, V. S., Kothari, S. L. Dar, K. B. Ganie, S. A. Shah, Y. R. (2020). Antioxidant, Nutritional, Structural, Thermal and Physico-Chemical Properties of Psyllium (*Plantago Ovata*) Seeds. *Curr. Res. Nutr. Food Sci.*, 8(3), 727–743. <http://dx.doi.org/10.12944/CRNFSJ.8.3.06>
- Shah, N. (2003). *Yogurt The Product and Its Manufacture*. In: B. Caballero, L. C. Trugo, P. M. Finlas (ed.) *Encyclopedia of Food Sciences and Nutrition* (pp. 6252–6259). New York: NY Academic Press.
- Shori, A. B., Aboufazel, F., H. J. Baba, A. S. (2018). Viability of Probiotics in Dairy Products: A Review Focusing on Yogurt, Ice Cream, and Cheese. In: A. Datta, M. Fakrudin, H. M. Nasir Iqbal, J. Abraham (Eds.), *Advances in biotechnology* (pp. 108–132). Las Vegas, NV, USA: Open Access eBooks.
- Shori, A. B., Baba, A. S. (2013). Effects of inclusion of *Alium sativum* and *Cinnamomum verum* in milk on the growth and activity of lactic acid bacteria during yogurt fermentation. *Am. Eurasian J. Agric. Environ. Sci.*, 13(11), 1448–1457.
- Srisuvar, N., Chinprahast, N., Prakitchaiwattana, C., Subhimaros, S. (2013). Effects of inulin and polydextrose on physicochemical and sensory properties of low-fat set yoghurt with probiotic-cultured banana purée. *LWT – Food Sci. Technol.*, 51(1), 30–36. <https://doi.org/10.1016/j.lwt.2012.10.018>
- Thompson, J. L., Lopetcharat, K., Drake, M. A. (2007). Preferences for commercial strawberry drinkable yogurts among African American, Caucasian, and Hispanic consumers in the United States. *J. Dairy Sci.*, 90(11), 4974–4987. <https://doi.org/10.3168/jds.2007-0313>
- Tuinier, R., Rolin, C., de Kruif, C. G. (2002). Electrosorption of pectin onto casein micelles. *Biomacromolecules*, 3, 632–638. <https://doi.org/10.1021/bm025530x>
- Ünal, B., Metin, S., Develi, N. (2003). Use of response surface methodology to describe the combined effect of storage time, locust bean gum and dry matter of milk on the physical properties of low-fat set yoghurt. *Int. Dairy J.*, 13, 909–916. [https://doi.org/10.1016/S0958-6946\(03\)00118-3](https://doi.org/10.1016/S0958-6946(03)00118-3)
- Xu, H., Xu, M., Yuan, F., Gao, Y. (2016). Chemical and antioxidant properties of functional compounds extracted from *Siraitia grosvenorii* by subcritical water. *Acta Aliment.*, 46(2), 162–171. <https://doi.org/10.1556/066.2016.0006>
- Yadav, N., Sharma, V., Kapila, S., Malik, R., Kuma, A. S. (2016). Hypocholesterolaemic and prebiotic effect of partially hydrolysed psyllium husk supplemented yoghurt. *J. Funct. Foods*, 24, 351–358. <https://doi.org/10.1016/j.jff.2016.04.028>
- Yekta, M., Ansari, S. (2019). Jujube mucilage as a potential stabilizer in stirred yogurt: Improvements in the

- physiochemical, rheological, and sensorial properties; *Food Sci. Nutr.*, 1–13. <https://doi.org/10.1002/fsn3.1230>
- Yildiz, H., Memnune, S., Gungor, N., Cetin, B., Eser, Z., Ercisl, S. (2009). Total phenolic content, antioxidant and antimicrobial activities of some medicinal plants. *Pakistan J. Pharmaceut. Sci.*, 22 (1), 102–106.
- Zhang, T., Jeong, C. H., Cheng, W. N., Bae, H., Seo, H. G., Petriello, M. C., Han, S. G.(2019). Moringa extract enhances the fermentative, textural, and bioactive properties of yogurt. *LWT – Food Sci. Technol.*, 101, 276–284. <https://doi.org/10.1016/j.lwt.2018.11.010>